

HUMANE SOCIETY OF KENT COUNTY



ANNUAL REPORT TO THE COMMUNITY

Fiscal Year Ending June 2008

Financial Reports 2008



Who we are

OUR MISSION

The Humane Society of Kent County promotes the humane treatment and responsible care of animals in West Michigan through education, example, placement and protection.

OUR VISION

To build a more compassionate community where all animals are given the care they deserve.

To make a financial gift, please call our Development Director, Mark Petz at (616) 791-8088. You may also visit our web site to make an online donation at any time.

3077 Wilson Drive NW
Grand Rapids, MI 49534
(616) 453-8900
www.hskc.org



Support and Revenue

Total: \$1,091,146*

- Contributions, Grants, Events & Bequests - 59%
- Shelter Revenue - 35.8%
- Investment Income - 5.2%

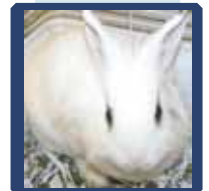
**After unrealized losses on perpetual trusts and endowment fund*



Operating Expenses

Total: \$1,520,144

- Shelter Operations - 73.0%
- Fundraising - 15.9%
- General and Administrative - 11.1%



Programs & Services

Adoptions: We helped over 2,600 animals find loving homes.

Reunited Pets: We reunited 183 pets with their owners.

Animal Admission and Evaluation: Each surrendered, rescued or stray animal receives comprehensive health and behavior evaluations. Over 7,300 animals were admitted.

Reducing Pet Overpopulation: All animals adopted from HSKC are spayed or neutered. We also offer low-cost sterilization surgeries for feral cats and pets whose owners cannot afford this procedure.

Humane Education: Youth and adults learn compassion, responsible pet care and animal safety through outreach and on-site programming.

Low-Cost Euthanasia Service: For when it's time to say good-bye to a beloved pet.

Emergency Foster Care for Pets:

Temporary shelter in loving foster homes for pets in cases of disasters and domestic violence.

Pet Behavior Assistance: Obedience classes and counseling for resolving behavior problems and strengthening the bonds between pets and their caregivers.

New for 2009: The Pet Care Assistance Program helps low-income pet owners with low-cost vaccinations, spay/neuter vouchers, behavior counseling and pet supplies.



HUMANE SOCIETY OF KENT COUNTY



HIGHLIGHTS

Fiscal Year Ending June 2008

9,508

Total Animals Served

Pets assisted through direct care or other community programs



Animals Placed

Pets placed through direct adoptions or transfers to breed-specific rescues

2,657

Dogs: 1,033
Cats: 1,379
Other: 245

Animals Admitted

Pets surrendered; including owned, stray and abandoned animals, as well as those humanely euthanized by owner request

7,381

Dogs: 2,232
Cats: 4,668
Other: 481

Humane Education

Children and adults served in Humane Education programs

3,409

Day Camps: 606
Pet Adventure Club: 45
Baby-Ready Pets: 53
School Programs: 2,705

Volunteering

Hours of service contributed by volunteers

16,831

Animal Care: 9,329
Adoptions: 2,799
Events: 2,409
Pet-Assisted Therapy: 1,271
Office/Special Projects: 1,023

Pet Behavior Assistance

Pets assisted through obedience classes and one-on-one counseling

155

Animals: 132
Consultations: 23

Cruelty Investigations

Animals rescued from cruelty and neglect

106

Dogs: 3
Cats: 101
Other: 2

Spays and Neuters

Number of pets sterilized before adoption or during clinics and special programs

1,972

Dogs: 683
Cats: 1,185
Other: 104